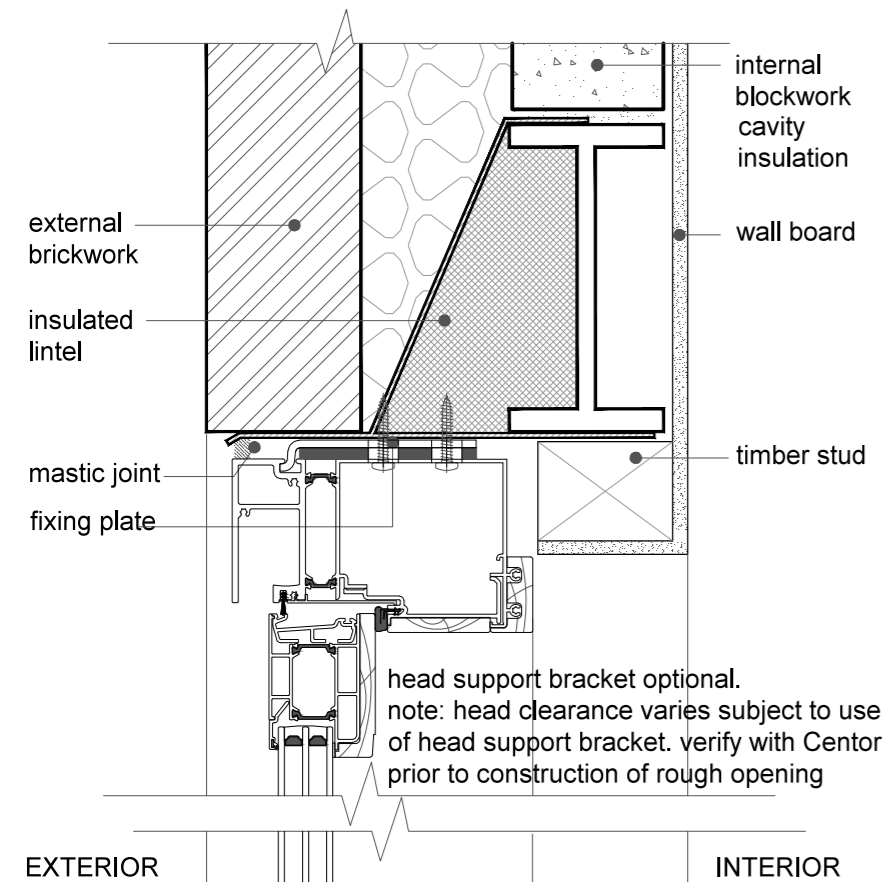


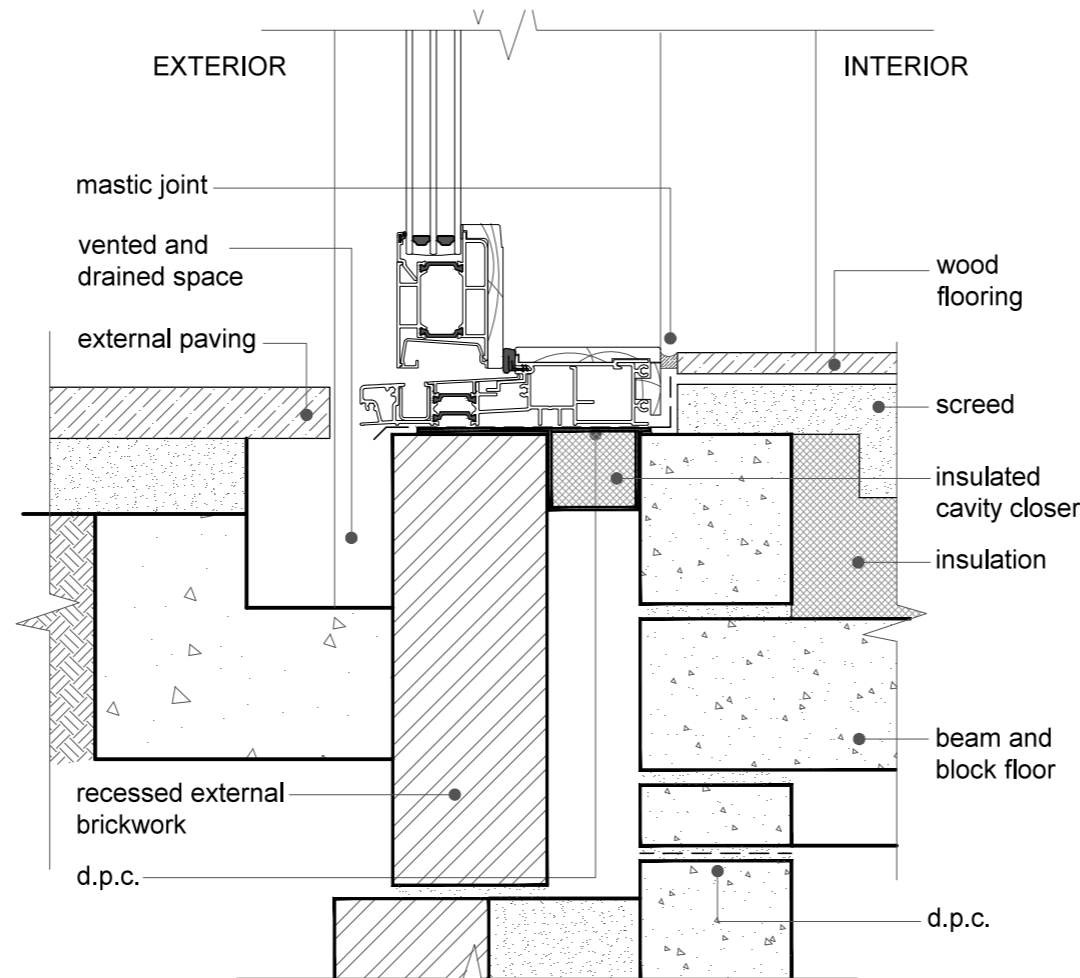
**1 jamb detail**

1:5



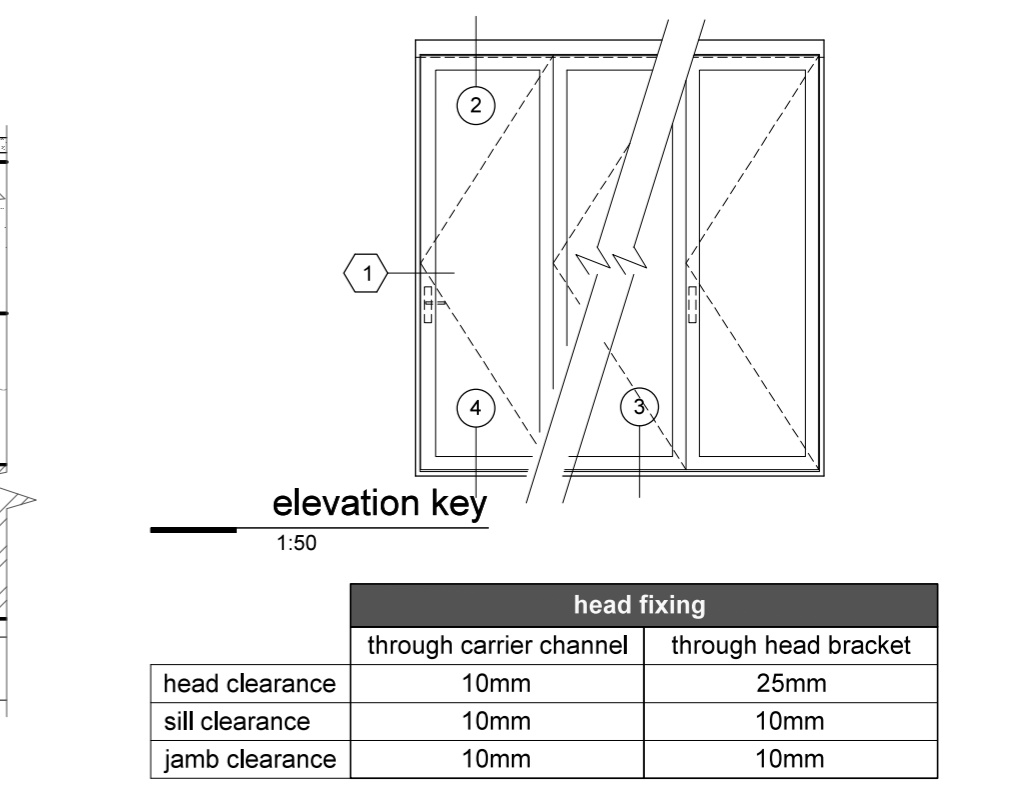
**2 head detail - steel lintel**

1:5



**3 sill detail - level paving**

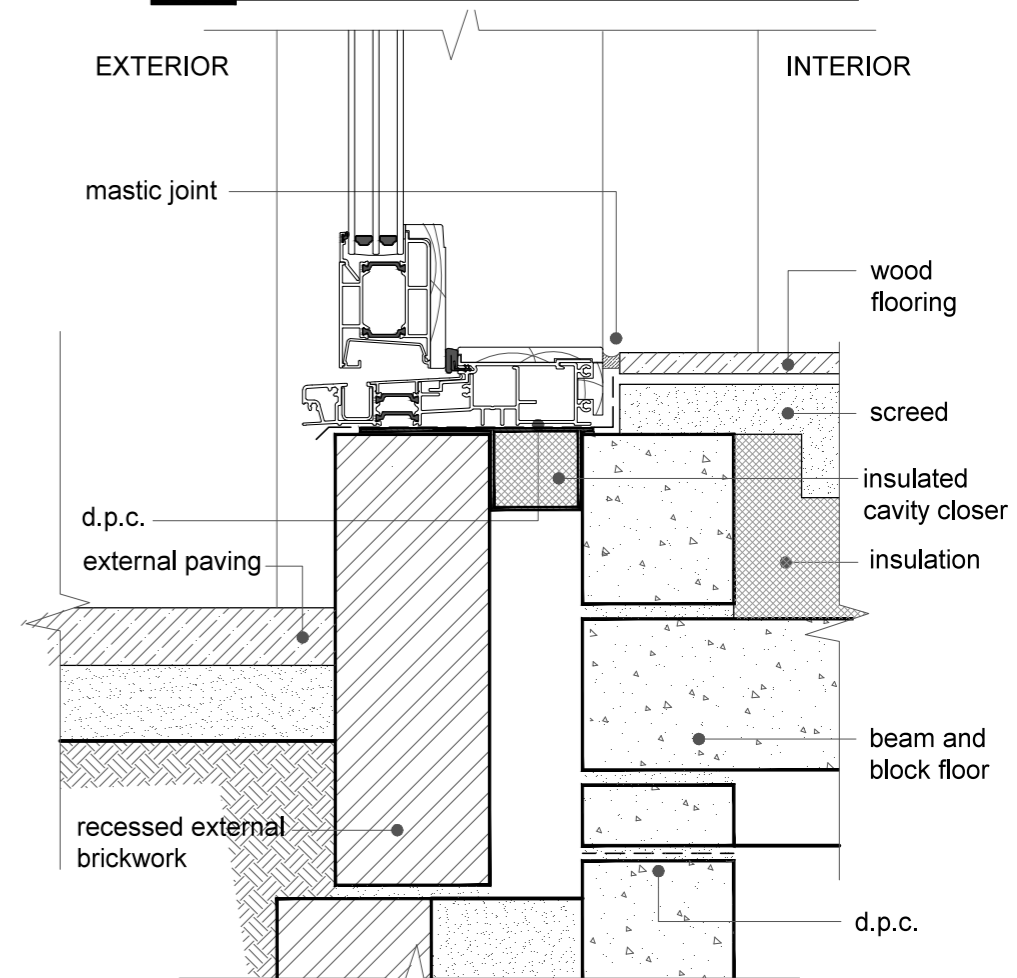
1:5



**elevation key**

1:50

**typical rough opening clearances**



**4 sill detail - step down**

1:5

Structural lintels should be fabricated and installed in accordance with a certified engineer's specifications. Steel lintels are strongly recommended for openings wider than 3.6M. For further information on lintel design refer to Centor Engineering Guide.